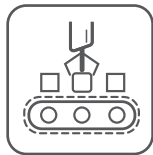




Your
International Partner in
Automation & Control



Automate International LLC

— www.automate-mena.com —

“ Automate International LLC is a leading engineering firm that has transformed itself to deliver intelligent solutions. ”



Contents

- 04 — INTRODUCTION
 - 05 — OUR SOLUTIONS
 - 10 — MEP SERVICES
 - 11 — AUTOMATION & CONTROL
 - 12 — SCADA/HMI SYSTEM
 - 13 — ENERGY MANAGEMENT SYSTEM
 - 18 — SUCCESS STORIES
 - 20 — TARGET SECTORS
 - 21 — ORGANOGRAM
- 



AUTOMATION

“ Delivering Consistently Over The Years
Producing Positive Results for Ever-growing
Industrial & Manufacturing Companies. ”

We provide excellence and process optimization in the ever-evolving world of industrial automation & control systems. We custom-build solutions that integrates your equipment seamlessly, enabling you to perform at optimum efficiency.

We have decades of experience in the field of industrial automation and control systems. Our experts provide comprehensive services in this field including, designing, programming, and installation of industrial equipment in accordance with international standards. We've worked with a wide range of clients, and we're always on the lookout for new ones.

We are devoted to delivering solutions while upholding our fundamental values and meeting mutual success standards. We're also committed to going above and beyond to be the best in the field of automation & control systems.

Vision

To be the leading firm in the field of Industrial Automation and Control by providing client-driven, cost-effective, and high-quality solutions.

Mission

Our mission is to meet and exceed our client's expectations by providing quality products and innovative solutions in the field of Automation & Control, and to consistently outperform our competition; while maintaining a dynamic and demanding work environment for our employees

Automation & Control



- PLC Based Control System
- DCS Based Control System
- Emergency Shutdown System (ESD)
- SCADA/HMI Based Control System
- Automatic Transfer System
- Tunnel Ventilation System (TVS)
- Environmental Control System (ECS)
- Plant Information Management System (PIMS)



Process Instrumentation



- Process Instruments
- Panel Mounted Controllers
- Final Control Element
 - Pneumatic Valves
 - Electric Valves
- Analytical Instruments & Sensors
- Pneumatic & Hydraulic Instruments
- Programmers/Recorders and Data Acquisition



Fire & Gas Detection

- Flame Detectors
- Combustible Gas Detectors
- Toxic Gas Detectors
- Acoustic Gas Detectors
- IR Gas Detectors
- Smoke Detectors
- Oxygen Detectors
- Gas Leak Detectors
- Safety System Controllers
- Surveillance System



Electrical Solutions

- LV/MV Switchgear Product
- LT Panels
- Motor Control Center Panels
- PLC/DCS Control Panels
- Power Factor Improvement Panels
- AMF/ATS - (Auto Transfer Switch)
- VFD Control Panels
- Light Distribution Panels
- Synchronization Panels
- IT Panels



Mechanical Solutions

Fabrication

- Welding / Argon Welding
- Tank / Vessel Fabrication
- Piping Work
- Mechanical Construction
- Sheet Metal Fabrication

Erection

- Erection of Steel Structure
- Erection of Piping / Pipe Racks
- Erection of Tanks
- Erection of Water Supply System
- Process Piping & Vessels



Surface Finishing Solutions

- Nickle Plating Process
- Nickle Free Plating
- Copper Plating Process
- Zinc Plating Process
- Chrome Plating Process

- Basic Salts
- Nickel Sulphate
- Boric Acid
- Sodium Cyanide
- Copper Sulphate

- Pre-Treatments
- Electrolytic cleaners
- Pickling additives
- Activators
- Post-Treatments



HVAC Control System

- Cooling Tower and Chillers
- Fabric Ducting
- Air vents and diffusers
- SS and MS pipeline working
- Main Chilled Water/
Microclimate pipe runs
- Install FCUs, CCUs,
Dampers, Fans, etc.
- Fitting of gauges, labels ID
bands, etc.
- Fitting AHUs, chilled water
pumps, chillers, etc.



Engineering Services

- Site Installation & Testing
- Site Commissioning
- Field Calibration Services
- Machines Installation &
Commissioning
- Pneumatic Piping Work
- Electrical & Mechanical Services
- Automation, Instrumentation Services
- After Sales Support



Automatic Machines

- Automatic Pouch Dispenser
- Automatic Sachet Collector
- Folding Machine
- Packing Machine
- Automatic production line
- Check Weigher/ Metal Detector



Case/Bag Packing

- Carton Forming & Closing
- Carton Filling
- Carton Strapping
- Form-Fill-Seal
- Bag Packing

Conveyors

- Modular Conveyors
- Belt Conveyors
- Roller Conveyors
- Flow Chain Conveyors
- Spiral Conveyors

Pallet Packing

- Palletizing
- Depalletizing
- Pallet Wrapping
- Pallet Strapping

MEP Services



Mechanical

- Mechanical Construction
- Sheet Metal Fabrication
- Power Panels Fabrication
- Welding & Fabrication
- Field Installation
- Pipe Fabrication
- Pressure Vessels
- Steel Tanks, Free Stalls
- Head Catchers



Electrical

- LV/MV Switchgear
- Cable Tray System
- Bus-bar Systems
- Lighting Control Systems
- Grounding (Earthing)
- Lightning Protection
- Power & Control Cabling
- Power Management Systems



Plumbing

- Industrial Pipes Plumbing
- Domestic Cold Water
- Domestic Hot Water
- Water Treatment
- Sanitary Drain
- Process Drain & Treatment
- Remodeling
- New Construction
- Grey Water Collection

Automation & Control



PLC SYSTEM

Rockwell/Allen Bradley

- | PLC5 | SLC500 | Micro Logix |
- | Compact Logix | Control Logix |
- | Studio 5000 Logix Designer |

Siemens

- | Simatic S7-1200 | Simatic S7-1500 |
- | Simatic S7-300 | Simatic S7-200 |
- | Simatic S7-400/400H/400F/400FH |
- | Distributed Controller ET-200 |

DCS SYSTEM

SUPCON

- | XP300 | ECS100 | TCS900 | ECS700 |

Yokogawa

- | Centum CS3000 | VP |

Emerson

- | Delta V |

Honeywell

- | EPKS R400/R410/R430 |
- | With C200/C200E & C300 |

Siemens

- | PCS7 |

SCADA/HMI System

Siemens

- | SIMATIC WinCC Professional |
- | SIMATIC WinCC V7 |

Rockwell

- | FactoryTalk RS View/ RSVIEW32 |

Yokogawa

- | SCADA Software (FAST/TOOLS |

ABB

- | ABB Ability SCADAventure |

Schneider

- | Geo SCADA Expert |
- | OPC Factory Server |

Wonderware / AVEVA

- | FactoryTalk RS View/ RSVIEW32 |
- | Intouch | AVEVA™ Edge |

Honeywell

- | Experion® SCADA | EPKS |

Energy Management System (EMS)

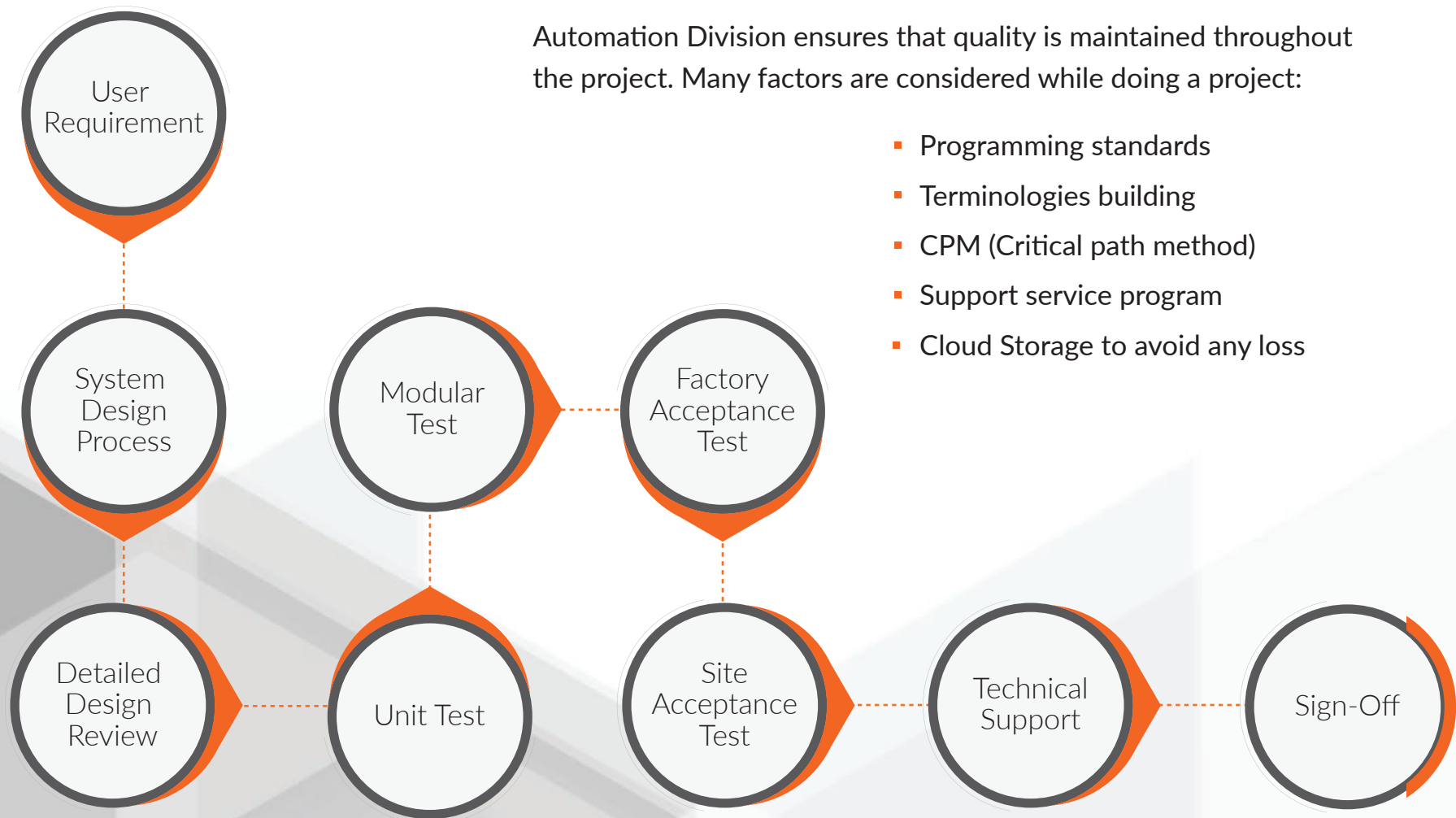
Utilities need greater visibility and operational control of transmission and sub-transmission networks as well as reduced EMS implementation costs. Automate's EMS can be deployed either fully integrated with our Advance distribution management system or as a stand-alone system. EMS consists of turnkey energy management & optimization solutions based on best practices. Energy Dashboard - Complete service offering platform for the monitoring of energy consumption in different units of a plant accessible from anywhere in the world. Energy can be stored from different sources like air, water, steam and wastes. And it can be visualized on the system from anywhere in the world.



Project Management Ethics

Automation Division ensures that quality is maintained throughout the project. Many factors are considered while doing a project:

- Programming standards
- Terminologies building
- CPM (Critical path method)
- Support service program
- Cloud Storage to avoid any loss



Flawless Solutions

Automation Division helps you in every stage of Project management. Our capabilities include all aspects of automation system design & development, fabrication, assembly, and testing. We have expertise in a diverse range of industries.

- Emergency Shutdown Systems [ESD]
- Tunnel Ventilation systems [TVS]
- Environmental Control Systems [ECS]
- Plant Information Management Systems [PIMS]
- Process Automation & Control Services
- Automatic Transfer Systems
- Burner Management Systems
- Fire & Gas Detection Systems
- Energy Optimization Solutions
- SCADA Systems, Business KPI Dashboards, and ERP Connectivity



Win-Win Condition

In automation division customer satisfaction plays a vital role. Customer Satisfaction is ensured by:

- Superior service and support excellence
- Professional, innovative and expert guidance
- Having a plan and option for post project support



Extra-Ordinary Services

Automation Division is recognized as a system integration solutions provider with a portfolio of diversified products and field services in Pakistan by serving all major industrial sectors.

- 24/7 365 technical support.
- No Late Deliveries.
- Creative and Unique Solutions.
- Back-up support.
- Multi-Channel Support.
- Field Commissioning.
- Emergency Field Service.
- Instrumentation Calibration.



Success Stories

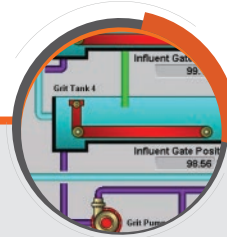
Automation



Automation of Pallet Tagging
Applicator Siemens S7-300
PLC Integration with
UBS-France Tag Applicator
System S7-1200 - CCI



Multiline Automatic Sachet
Collator Machine
Unilever



SCADA Based System for
Oil Station Siemens 7-1200
with WinCC Flexible
PepsiCo



Water Softener Plant
Automation Rockwell Control-
Logix with FLEX - Nestlé

Instrumentation



Flow, Level, Temperature &
Pressure Control Project
PepsiCo



Level, Flow & Temperature
Monitoring for Water Saving
Project - Nestlé



Steam Control Valve with
Electric Actuator
BAT



Turbidity Monitoring System
for Water Saving Project
Nestlé

Electrical



Control Cabinets for
Ketchup Plant
Unilever



ATEX Lighting Project
(Explosion Proof Lights)
Chalmit Lighting, UK
Unilever



Ergonomically Appropriate
Battery Tugger for Lifters
Nestlé



Juice Pasteurizer Control
Panel Rockwell MicroLogix
PLC System
Tetra Pak

Mechanical



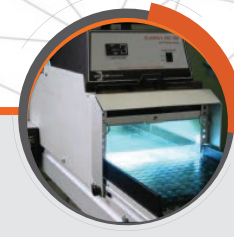
SS Tubing Job for
AGRON - I & II
Nestlé



Vacuum Based Bag Lifting
Mechanism
Nestlé



Cargo Lifting Mechanism
for High Hygiene Area
Nestlé

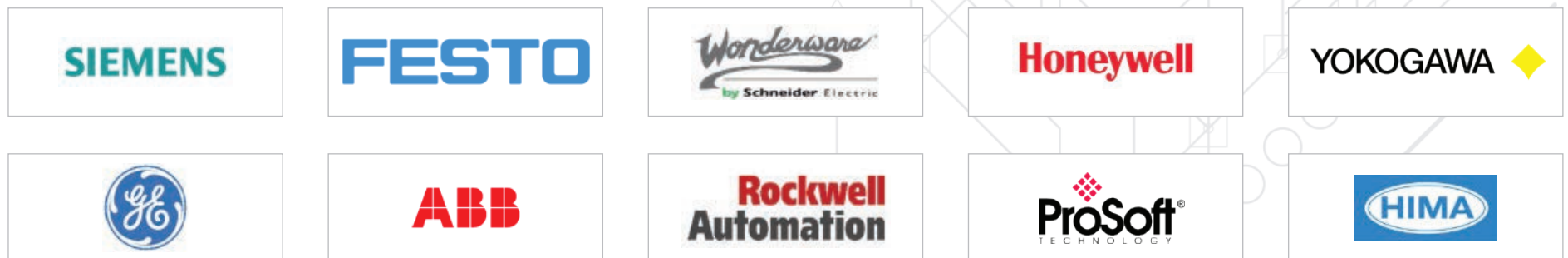


UV Based Disinfectant
Conveyor System
Nestlé

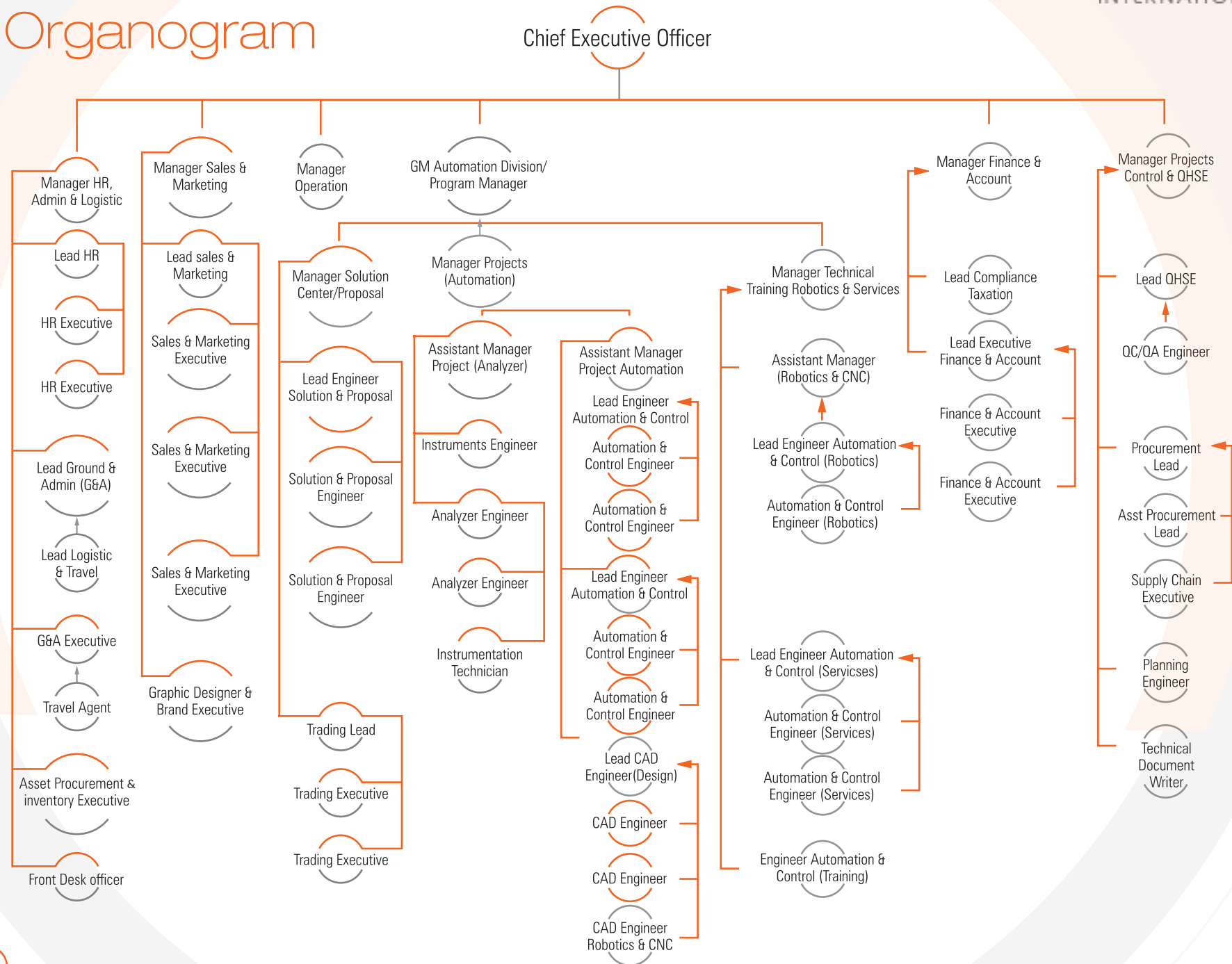
Target Sectors



Brands



Organogram





UAE Office

319 Al-Qazi Building, Fish Round About,
Deira, DUBAI, PO Box 37641
United Arab Emirates

Tel: +971-4 3586-3147

Fax: +971-4 3586-5192



Email: info@automate-mena.com

Web: www.automate-mena.com